

## **Spare parts catalog for "VL01-XCA"**

To avoid errors, when ordering please specify:

- Complete type of hoist
- Date of manufacture and serial number
- Spare part code
- Spare part designation
- Additional information



### **0) HOIST DESCRIPTION**

#### **1) HOISTING MOTOR AND CASING**

1.1) Specific items part for single phased hoist

#### **2) MECHANISM /BRAKE**

2.1) Specific items part for single phased hoist

#### **3) LIFTING ASSEMBLY**

3.1) Precut chain

#### **4) LHT TROLLEY - VL1/XCA**

4.1) Travelling machinery - Before 2004

4.2) Travelling machinery - After 2004

4.3) Adjustment of flanges for hoist 125 kg - 1 fall

#### **5) ELECTRIC BOX**

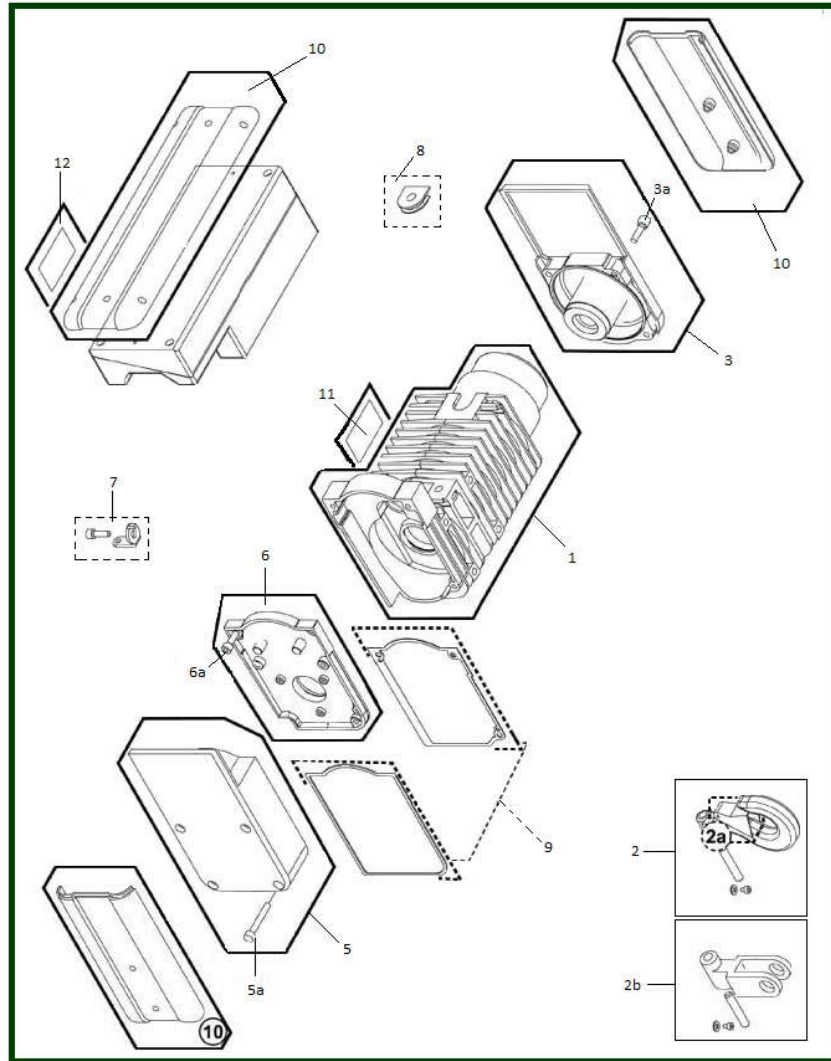
5.1) Specific items part for single phased hoist

#### **6) CAM OPERATED LIMIT SWITCH - OPTION**

## 0) Hoist description

DESCRIPTION							
CAPACITE DE CHARGE KG	EUROCHAIN CHAINLEC	NOMBRE DE BRINS	CHAINE PAS MM	VITESSE DE LEVAGE M/MM	PUISSANCE MOTEUR DE LEVAGE KW	MONO VITESSE	BI VITESSE
60	VLI-XCA 016 B1	1	3.1 x 9.3	16/4	0.2/0.05		X
	VLI-XCA 060 B2	1	3.1 x 9.3	8/2	0.2/0.05		X
80	VLI-XCA 080 B2	1	3.1 x 9.3	8/2	0.2/0.05		X
125	VLI-XCA 128 B1	1	3.1 x 9.3	8/2	0.2/0.05		X
	VLI-XCA 124 B2	2	3.1 x 9.3	4/1	0.2/0.05		X
250	VLI-XCA 254 B1	2	3.1 x 9.3	4/1	0.2/0.05		X

## 1) Hoisting motor and casing



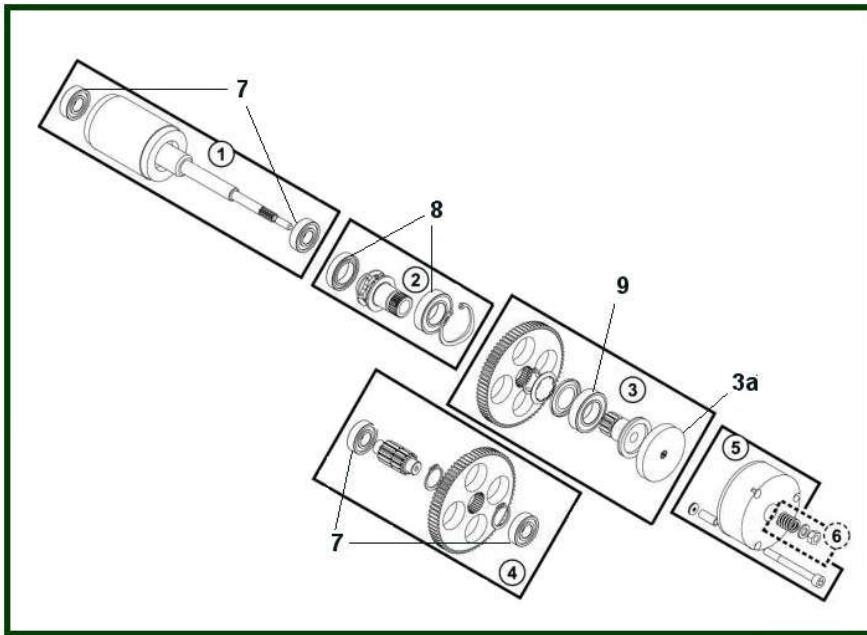
item	reference	description	observation	Quantity
1	<a href="#">2218051</a>	Casing assembled with stator - 2 speeds	230V - 50Hz - 3Ph - 2/8 poles	1
1	<a href="#">2218050</a>	Casing assembled with stator - 2 speeds	400-460V - 50 60Hz - 3Ph - 2/8 poles	1
1	<a href="#">2218053</a>	Casing assembly with stator	230V 60Hz	1
1	<a href="#">2218052</a>	Casing assembly with stator	400V 60Hz	1
1	<a href="#">2218054</a>	Casing assembly with stator	500-575V - 50Hz 60Hz	1
2	<a href="#">2218060</a>	Standard upper hook assembly	Type A jusqu'à Décembre 2007 / Type A up to Dec. 2007	1
2a	<a href="#">2212016</a>	Safety latch - Steel	Crochet supérieur - 1brin / Upper hook - 1 fall	1
2b	<a href="#">2218061</a>	Suspension bracket assembly - Perpendicular mounting		1
2c	<a href="#">52316209</a>	Suspension ring assembly - Perpendicular mounting	Pour chariot manuel / For manual trolley	1
3	<a href="#">2218055</a>	Motor end cap assembly		1
3a	<a href="#">550979</a>	CHC screw 6x25		4
5	<a href="#">2218056</a>	Brake cover set		1
5a	<a href="#">52253667</a>	Screw CHC 6x55mm		4
6	<a href="#">2218057</a>	Brake mounting flange assembly		1
6a	<a href="#">7215353A</a>	CHC screw 6x16		4
7	<a href="#">2218000</a>	Push button station fixing point		1
8	<a href="#">2218004</a>	Grommet		1
9	<a href="#">2218058</a>	Gearbox seal and brake casing seal		1
10	<a href="#">2218071</a>	Stickers and covers	VL01	1
11	<a href="#">2216520</a>	Motor data plate	N° de série obligatoire / Only if serial number provided	1
12	<a href="#">2219938</a>	Set of 10 load plates	125 kg	1

12	<u>2219917</u>	Set of 10 load plates	160 kg	1
12	<u>2219918</u>	Set of 10 load plates	250 kg	1
12	<u>2219898</u>	Set of 10 load plates - Hoist	60 kg	1
12	<u>2219899</u>	Set of 10 load plates - Hoist	80 kg	1
-	<u>2218070</u>	Rain cover		1

## 1.1) Specific items part for single phased hoist

item	reference	description	observation	Quantity
1	<u>52315878</u>	Hoisting motor 115V 60Hz-1PH-4P-1800 tr/min	Pieces spécifiques monophasées Specific items part for single phased hoist	1
1	<u>52315877</u>	Hoisting motor 230V 50Hz-1PH-4P-1500 tr/min	Pieces spécifiques monophasées Specific items part for single phased hoist	1
1	<u>52315876</u>	Hoisting motor 230V/50Hz-1PH-2P-3000 tr/min	Pieces spécifiques monophasées Specific items part for single phased hoist	1
1	<u>52315875</u>	Hoisting motor 230V/60Hz-1PH-2P-3600 tr/min	Pieces spécifiques monophasées Specific items part for single phased hoist	1
1	<u>52315879</u>	Hoisting motor 230V/60Hz-1PH-4P-1800 tr/min	Pieces spécifiques monophasées Specific items part for single phased hoist	1
10	<u>52292875</u>	Marking and cover set - C01	Pieces spécifiques monophasées Specific items part for single phased hoist	1

## 2) Mechanism / Brake



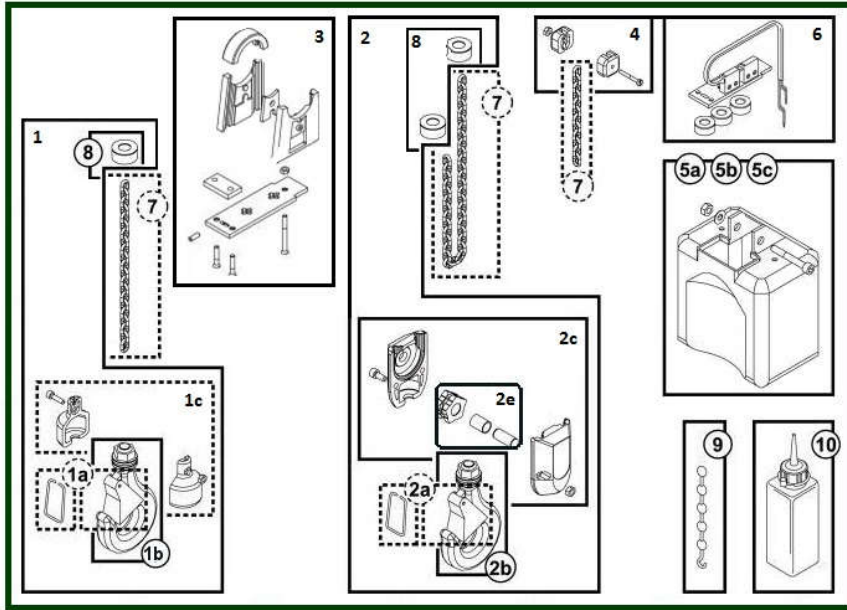
ATTENTION : Toutes les vis démontées doivent être remplacées par de la visserie standard  
 WARNING : Any screws removed must be replaced by standard screws

item	reference	description	observation	Quantity
1	<a href="#">2218040</a>	Rotor assembly		1
2	<a href="#">2218041</a>	Chain sprocket assembly		1
3	<a href="#">2218042</a>	Friction disc assembly for limiter		1
3a	<a href="#">52253656</a>	Friction disc		1
4	<a href="#">2218043</a>	Complete gear step		1
5	<a href="#">2218031</a>	Complete brake	100V / 230V	1
5	<a href="#">2218030</a>	Complete brake	190V / 400V	1
5	<a href="#">2218032</a>	Complete brake	230V / 500V / 575V	1
6	<a href="#">2218044</a>	Limiter spring assembly		2
7-8-9	<a href="#">52309505</a>	Casing bearing set		1

## 2.1) Specific items part for single phased hoist

item	reference	description	observation	Quantity
1	<u>52303646</u>	Rotor assembly for 2 poles motor 3000 tr/min	Pieces spécifiques monophasées Specific items part for single phased hoist	1
1	<u>52315094</u>	Rotor assembly for 4 poles motor 1500 tr/min	Pieces spécifiques monophasées Specific items part for single phased hoist	1

### 3) Lifting Assembly



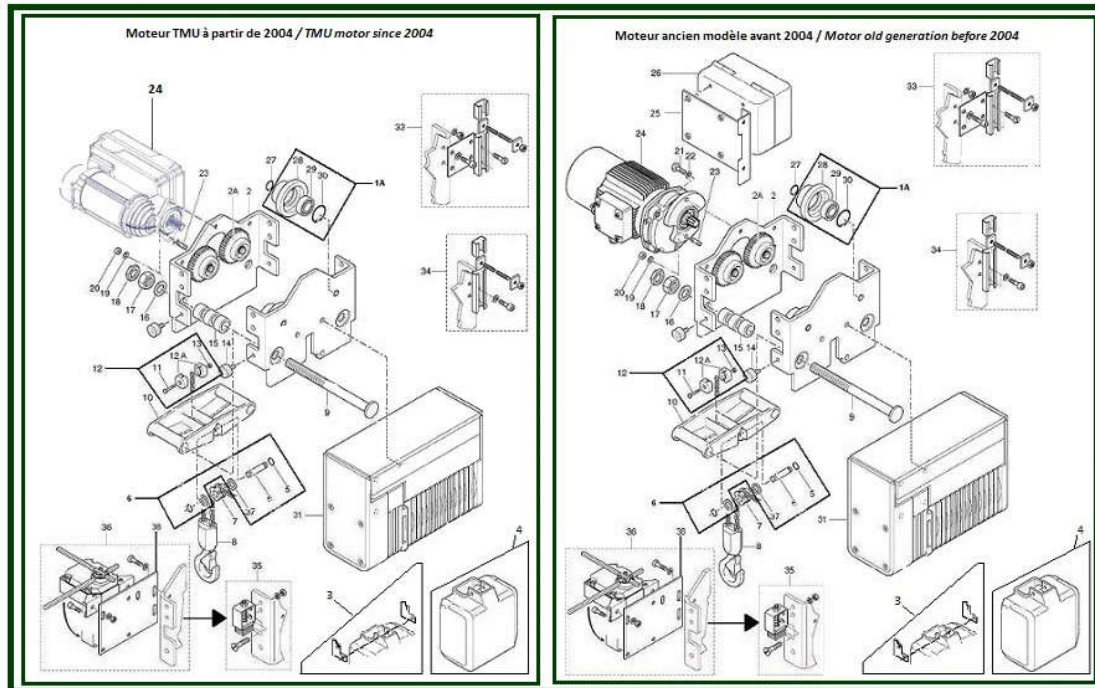
item	reference	description	observation	Quantity
1	<a href="#">2218045</a>	Lifting hook block	1 brin / 1 fall	1
1	<a href="#">52371853</a>	Stainless steel lifting hook block	1 brin / 1 fall	1
1a 2a	<a href="#">A001512</a>	Safety latch - Steel wire type	1 brin / 1 fall-2 brins / 2 falls PHR - 500 kg	1
1 b 2 b	<a href="#">2218046</a>	Lifting hook		1
1 b 2 b	<a href="#">52370686</a>	Stainless steel lifting hook		1
1c	<a href="#">2218047</a>	Set of 2 half - casing with axle and screws		1
2	<a href="#">2218048</a>	Hook block assembly	2 brins / 2 falls	1
2	<a href="#">52371854</a>	Stainless steel hook block assembly	2 brins / 2 falls	1
2a	<a href="#">2212016</a>	Safety latch - Steel	Crochet supérieur - 1brin / Upper hook - 1 fall	1
2b	<a href="#">52392414</a>	RANMAS lifting hook		1
2c	<a href="#">2218085</a>	Set of 2 half-casing with axle wheel and screws		1
2e	<a href="#">2218086</a>	idler sprocket axle set		1
3	<a href="#">2218024</a>	Upper and lower chain guide assembly		1
4	<a href="#">2218025</a>	Slack fall stop assembly		1
5a	<a href="#">2218026</a>	Chain bucket	7 m	1
5b	<a href="#">2218027</a>	Chain bucket	16 m	1
5c	<a href="#">2218028</a>	Chain bucket	30 m	1
6	<a href="#">2218029</a>	Upper and lower limit switch assembly		1
7	<a href="#">2218075V</a>	Galvanized load chain - 3.1x9.3		0
7	<a href="#">52288934</a>	Stainless steel load chain - 3.1x9.3	Plus fournie/Not supply anymore	0
8	<a href="#">2218076</a>	Rubber buffer	1 brin / 1 Fall : 2 pces - 2 brins / 2 Falls : 3 pces	1
9	<a href="#">2218077</a>	Load chain mounting		1
10	<a href="#">9995008</a>	Oil can	125 ml	1
-	<a href="#">2218023</a>	Set of 10 load plates - Hook block	250 kg - 2 brins / 2 falls	1
-	<a href="#">2218036</a>	Set of 10 load plates - Hook block	60 kg - 1 brin / 1 fall	1
-	<a href="#">2218037</a>	Set of 10 load plates - Hook block	80 kg - 1 brin / 1 fall	1
-	<a href="#">2218038</a>	Set of 10 load plates - Hook block	125 kg - 1 brin / 1 fall	1
-	<a href="#">2218021</a>	Set of 10 load plates - Hook block	125 kg - 2 brins / 2 falls	1
-	<a href="#">2218022</a>	Set of 10 load plates - Hook block	160 kg - 2 brins / 2 falls	1



### **3.1) Precut chain**

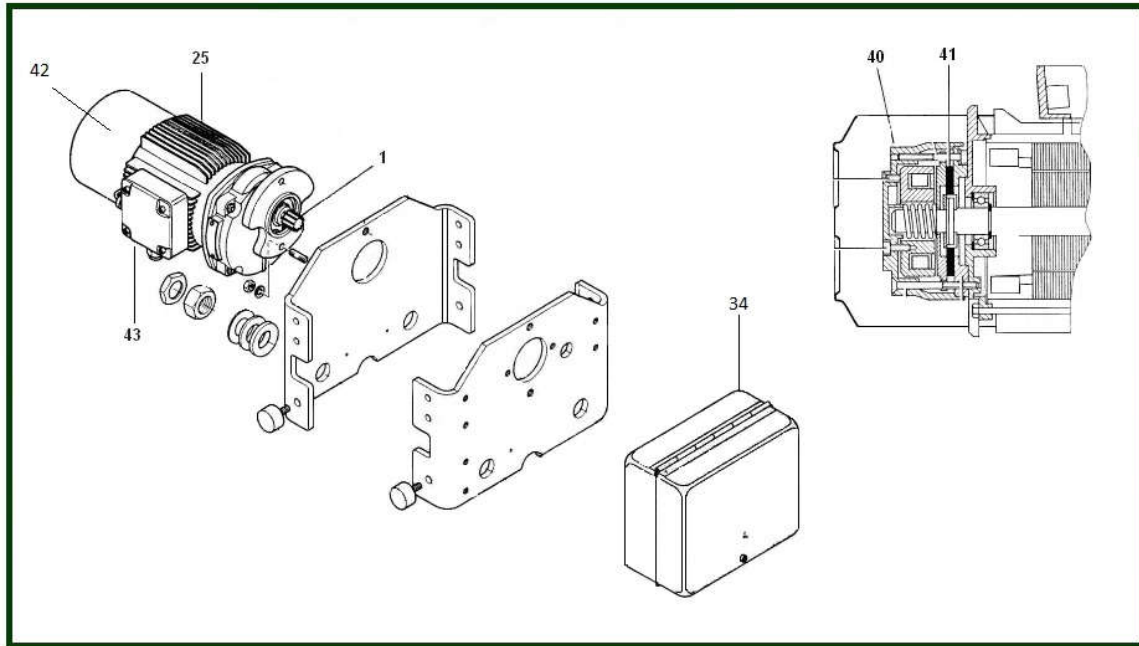
<b>item</b>	<b>reference</b>	<b>description</b>	<b>observation</b>	<b>Quantity</b>
	<u>53019577</u>	Galvanized load chain - 3.1x9.3	6 metres / meters	1
	<u>53019587</u>	Galvanized load chain - 3.1x9.3	7 metres / meters	1
	<u>53019597</u>	Galvanized load chain - 3.1x9.3	8 metres / meters	1

## 4) LHT Trolley - VL1/XCA



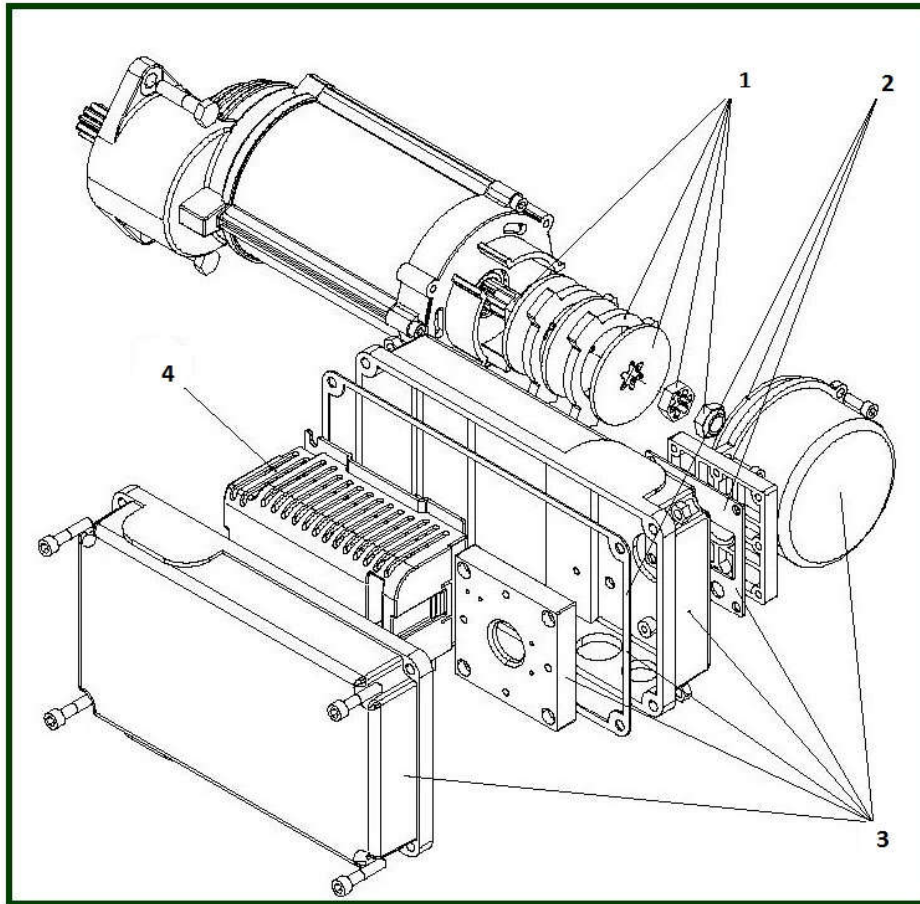
item	reference	description	observation	Quantity
1	<a href="#">52275968</a>	end plate without wheel		1
2	<a href="#">52275959</a>	end plate motor without wheel		1
2A	<a href="#">52307146</a>	Travel wheel driving set D42		2
3	<a href="#">52310023</a>	Chain bag support		2
4	<a href="#">52293116</a>	Chain bag		1
6	<a href="#">52324497</a>	Shaft kit		1
7	<a href="#">52264429</a>	Return wheel		1
8	<a href="#">2218048</a>	Hook block assembly	2 brins / 2 falls	1
8	<a href="#">2218045</a>	Lifting hook block	1 brin / 1 fall	1
9	<a href="#">52275973</a>	Long tie rod - L 208	Fer / beam 106 131	2
9	<a href="#">52281233</a>	Short tie rod - L 180	Fer/ beam 100	2
10	<a href="#">52275969</a>	return parts	+ Item 6	1
12	<a href="#">2218025</a>	Slack fall stop assembly		1
15	<a href="#">52275972</a>	Sleeve		1
16	<a href="#">50001603</a>	Plate washer	2 brins / 2 falls	1
17	<a href="#">51001023</a>	Nut HM16		2
18	<a href="#">51001032</a>	Nut PAL M16		2
19 -22	<a href="#">831504</a>	Brake washer A M8	VS4 .B D - VS5.....D/	1
20	<a href="#">51001025</a>	Nut HM8		2
21	<a href="#">830203</a>	Screw Hm M8x 20	C3 / PRC - Moteur N1 / N1 motor	1
23	<a href="#">558122</a>	Screw		1
24	<a href="#">Voir suite</a>	Motor gear 20M		1
25	<a href="#">52281206</a>	Support cubicle		1
26	<a href="#">2133033</a>	C board	2VD/2CS MAC	1
26	<a href="#">558071</a>	Sarel cubicle		1
28	<a href="#">52307145</a>	Travel wheel idle D42		2
29	<a href="#">833719</a>	Bearing		4
35	<a href="#">5531802D</a>	Brush support	C1-C2-C3	1
35	<a href="#">7661106</a>	earth brush	C1-C2-C3 - D DA - 75 amp.	1
36	<a href="#">558995</a>	Limit switch support bracket	C1-C2-C3 - 1 seuil / 1 step	1
36	<a href="#">7541312S</a>	Travelling limit switch		1
-	<a href="#">60026373</a>	Circlip M10		2

## 4.1) Travelling machinery - Before 2004



item	reference	description	observation	Quantity
1	<a href="#">550467</a>	Drive pinion - 11 teeth		1
25	<a href="#">558983</a>	Gearmotor LS56 5 m/mn - 0,09	C1-C2-C3	1
25	<a href="#">558982</a>	Gearmotor LS56 10 m/mn - 0,09	C1-C2-C3	1
25	<a href="#">558980</a>	Gearmotor LS56 20m/mn - 0,09	C1	1
25	<a href="#">558986</a>	Gearmotor LS71 11/3 m/mn - 0,12/0.03	C1-C2-C3 Plus fourni / Not supplied anymore	1
25	<a href="#">558987</a>	Gearmotor LS71 20/5 m/mn - 0,12/0,03	C1	1
34	<a href="#">834193</a>	PC board C1 KDI R1	Avant/Before 06/2000	1
34	<a href="#">834194</a>	PC board C1 KDI R1	Avant/Before 06/2000	1
34	<a href="#">558071</a>	Sarel cubicle		1
40	<a href="#">990996</a>	Dual speeds brake FMC15	96V	1
40	<a href="#">990997</a>	One speed brake FMC15	190V	1
41	<a href="#">990998</a>	Brake lining		1
42	<a href="#">558972</a>	Fan cover - LS56	C1-C2-C3	1
42	<a href="#">558977</a>	Fan cover - LS63	C1-C2-C33 Plus fourni / Not supplied anymore	1
42	<a href="#">558979</a>	Fan cover - LS71	C1-C2-C3	1
43	<a href="#">990964</a>	junction box - One speed		1
43	<a href="#">990967</a>	junction box - Two speeds		1
-	<a href="#">990999</a>	Brake rectifier - 1 speed		1
-	<a href="#">991000</a>	Brake rectifier - 2 speeds		1
-	<a href="#">2243014</a>	Plug (male) with wire length	L=1m50	1
-	<a href="#">52295301</a>	Rain Cover		1

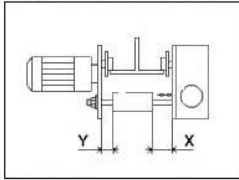
## 4.2) Travelling machinery - After 2004



item	reference	description	observation	Quantity
1	<a href="#">52296293</a>	Brake repair set	M06-001V	1
2	<a href="#">52300292</a>	Sealing set	M06-008V	1
3	<a href="#">52300291</a>	Terminal box	M06-007V	1
4	<a href="#">52300287</a>	inverter and filter	48VAC - M06-003V	1
4	<a href="#">52300288</a>	inverter and filter	115VAC - M06-004V	1
5	<a href="#">52297959</a>	Connection cable	CCGC LCP-04	1

## 4.3) Adjustment of flanges for hoist 125 kg - 1 fall

Réglage des flasques pour palan 125 kg (1 brin)  
Adjustment of flanges for hoist 125 kg (1 fall)

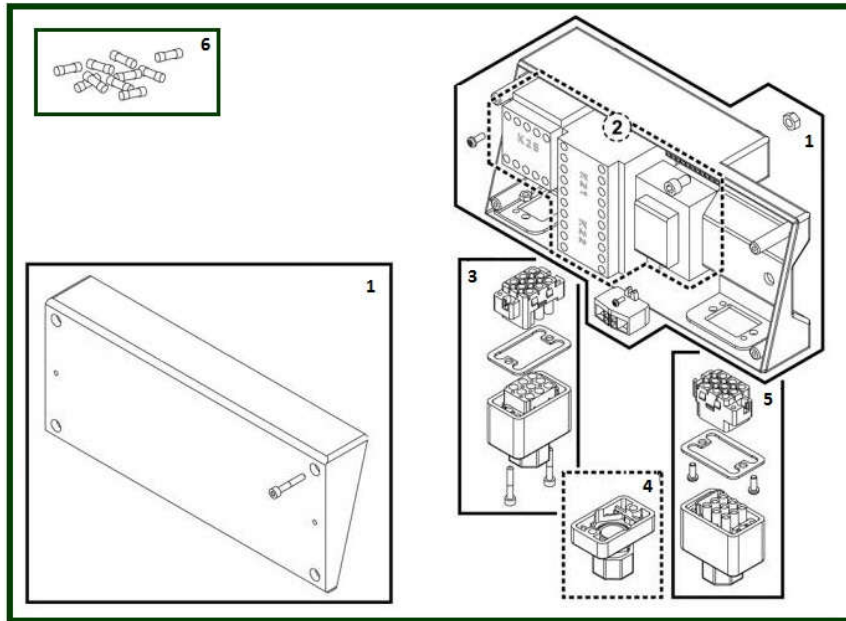


Le réglage des flasques est le même en 1 et 2 brins, il y a juste une inversion entre X et Y  
The adjustment of flanges is same between 1 fall and 2 falls. There is just an inversion between X and Y

Largeur de fer / Beam	X		Y		
	Entretoises / Tie bolt	Rondelles / Washer 3 mm	Entretoises / Tie bolt	Rondelles / Washer 3mm	
55	0	3	0	0	Tirants courts / Short tie rod
58	0	4	0	0	
64	1	1	0	0	
66	1	1	0	1	
73	1	2	0	2	
74	1	3	0	2	
82	1	4	0	3	
90	2	0	1	0	
91	2	0	1	0	
98	2	2	1	1	
100	2	2	1	1	Tirants longs / Long tie rod
106	2	3	1	2	
110	2	4	1	3	
113	2	4	1	4	
119	3	0	2	0	
120	3	0	2	0	
125	3	1	2	1	
130	3	2	2	1	
131	3	2	2	2	

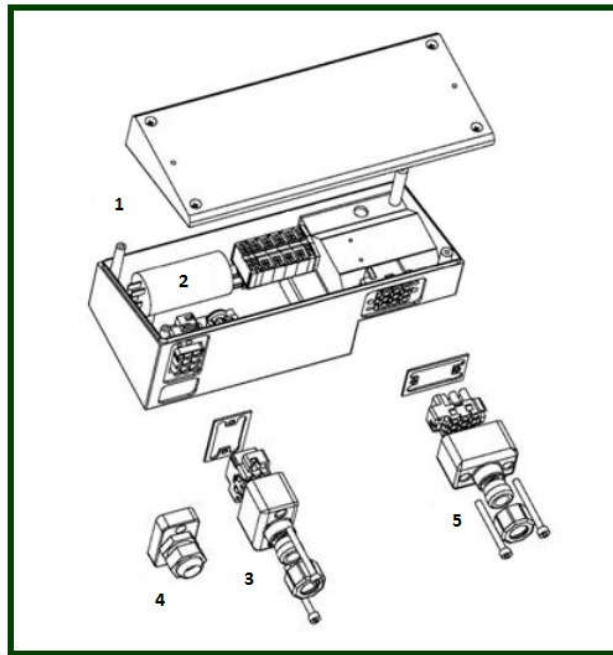
Attention ! Dans tous les cas, il faut laisser une ou plusieurs rondelles de réglage à l'extérieur des flasques, sous l'écrou de serrage  
Important ! In all cases, it is necessary to leave one or several adjusting washers outside of the flanges, under the tightening nut

## 5) Electric Box



item	reference	description	observation	Quantity
1	<a href="#">2218078</a>	electric cubicle assembly motor (cover electrical pieces)	1500 tr/min	1
2	<a href="#">833098</a>	Brake control module - Main switching control type	230 - 400 V Coffret acier auto/Steel cubicle automotive	1
2	<a href="#">833096</a>	Brake control module - Main switching control type	500 V Palan type seulement/ type hoist only	1
2	<a href="#">2218091</a>	PC board	230V - 48V - 50 60Hz	1
2	<a href="#">2218095</a>	PC board	230V - 115V	1
2	<a href="#">2218090</a>	PC board	400V - 48V - 50Hz	1
2	<a href="#">2218092</a>	PC board	460V - 48V - 50 60Hz	1
2	<a href="#">2218094</a>	PC board	460V - 115V	1
2	<a href="#">2218096</a>	PC board	575V-115V	1
2	<a href="#">2218093</a>	PC board		1
3	<a href="#">2249982</a>	power supply plug		1
4	<a href="#">2249947</a>	Cable gland assembly		1
5	<a href="#">2249945</a>	Connecting plug set for push-button box	M+F Standard	1
6	<a href="#">2219988</a>	Set of 10 fuses		1
-	<a href="#">7383020</a>	earth		1
-	<a href="#">52305007</a>	electric box cover set		1
-	<a href="#">52310024</a>	electrics box base		1

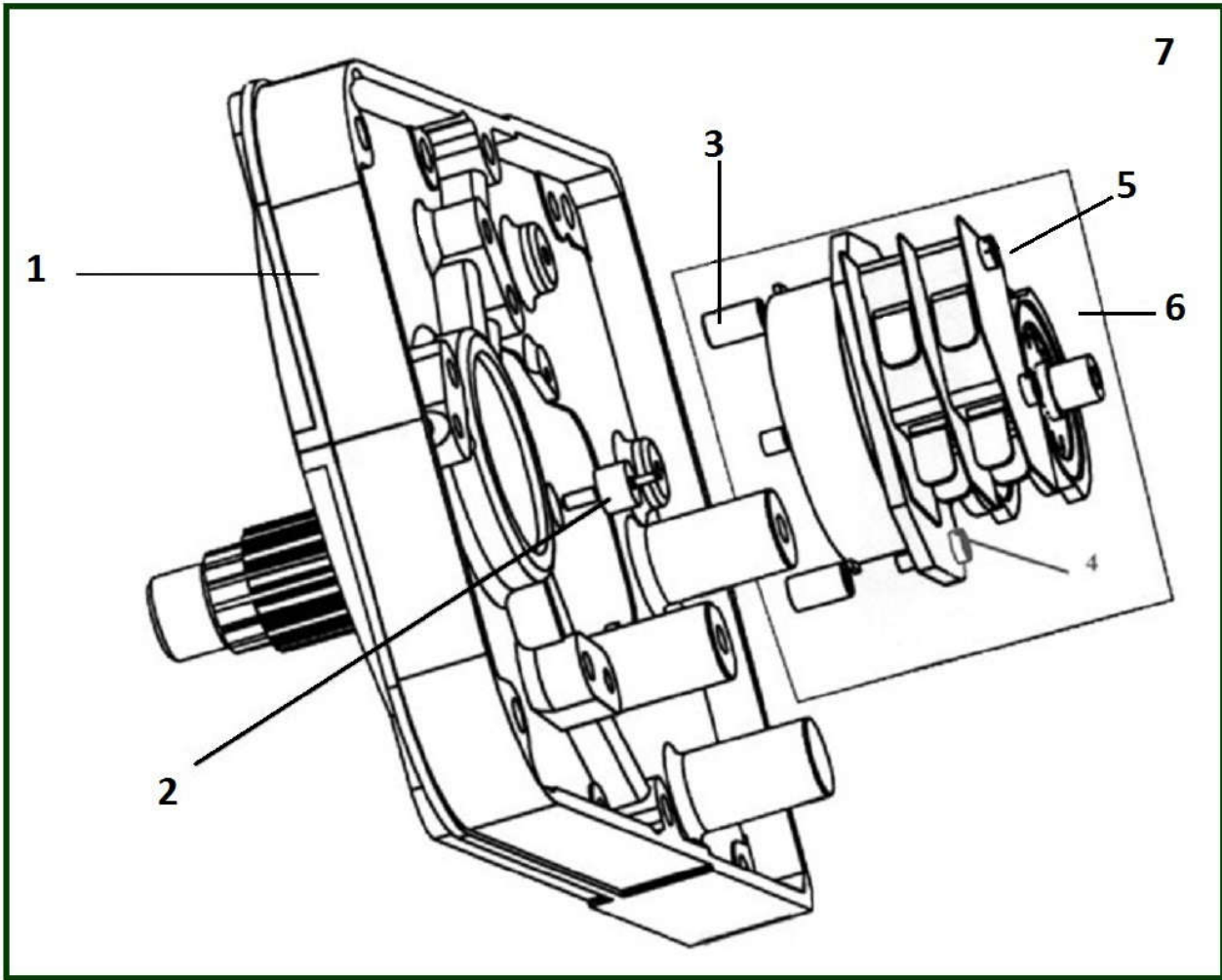
## 5.1) Specific items part for single phased hoist



item	reference	description	observation	Quantity
1	<a href="#">2218078</a>	electric cubicle assembly motor (cover electrical pieces)	1500 tr/min	1
1	<a href="#">52315940</a>	electric cubicle assembly motor (cover electrical pieces)	1500 tr/min	1
2	<a href="#">833098</a>	Brake control module - Main switching control type	230 and 400 V Coffret acier auto/Steel cubicle automotive	1
2	<a href="#">52314634</a>	Condensator 12 F - Single phase	230 V - 50-60 Hz Moteur 4 p les - 1500 tr/min	1
2	<a href="#">52297338</a>	Condensator 25 F - Single phase	230 V - 50-60 Hz - 48 V Moteur 2 p les - 3000 tr/min	1
3	<a href="#">2249982</a>	power supply plug		1
4	<a href="#">2249947</a>	Cable gland assembly		1
5	<a href="#">2249945</a>	Connecting plug set for push-button box	M+F Standard	1
6	<a href="#">833508</a>	Direct control pendant for monophased hoist		1
-	<a href="#">52315883</a>	Fuses set	230 V	1
-	<a href="#">52297342</a>	Resistor	47 Ohms	1



## 6) Cam operated limit switch - Option



item	reference	description	observation	Quantity
1	<a href="#">52265595</a>	Flange only	From 0 m to 7 m	1
2	<a href="#">52265596</a>	Shaft	From 0 m to 7 m	1
3	<a href="#">52315475</a>	Limit switch fixing kit assembly spacer	3+4+5	1
6	<a href="#">52265594</a>	Limit switch + shaft - 2 cams	From 0 m to 7 m	1
7	<a href="#">52265599</a>	Complete operated limit switch - 2 cams	From 0 m to 7 m	1